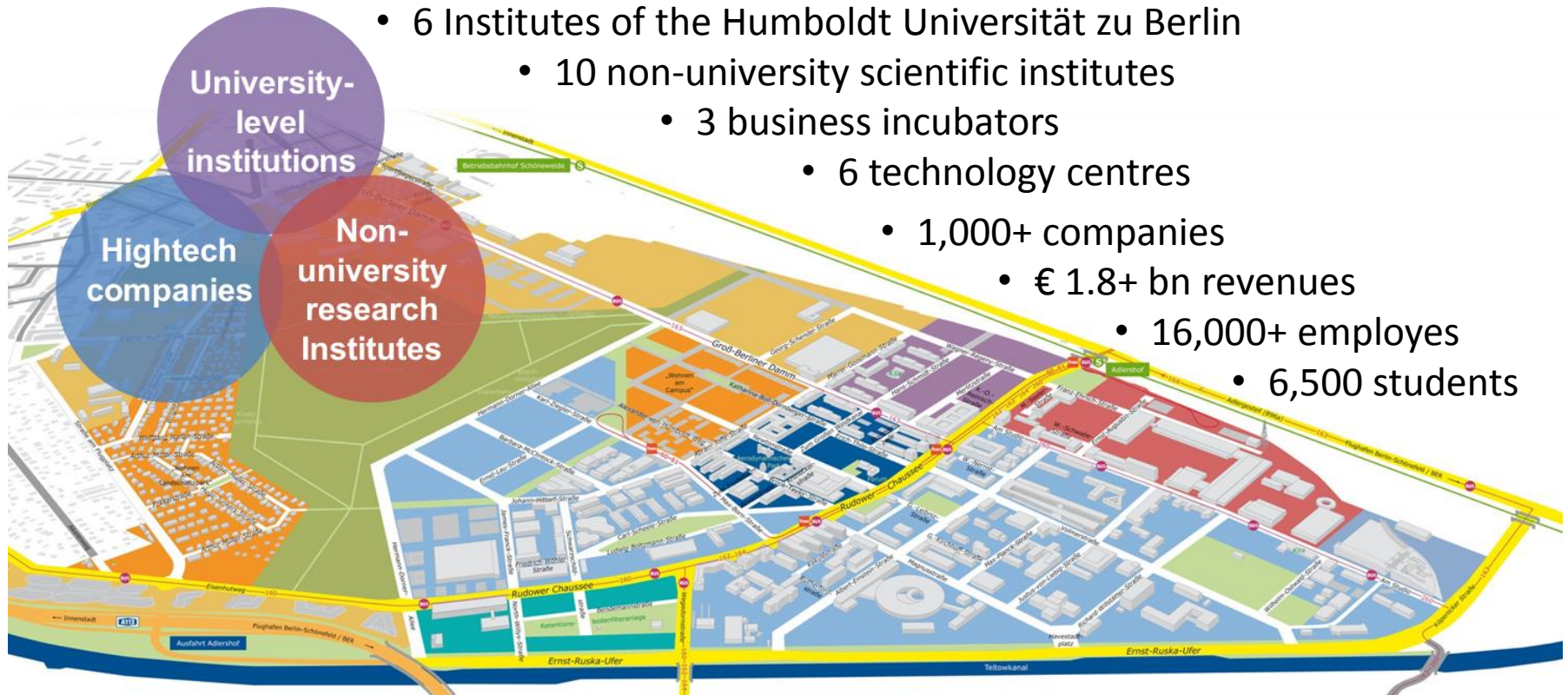


Science at Work

Technology Park Berlin Adlershof

Adlershof: A unique SciTech Cluster

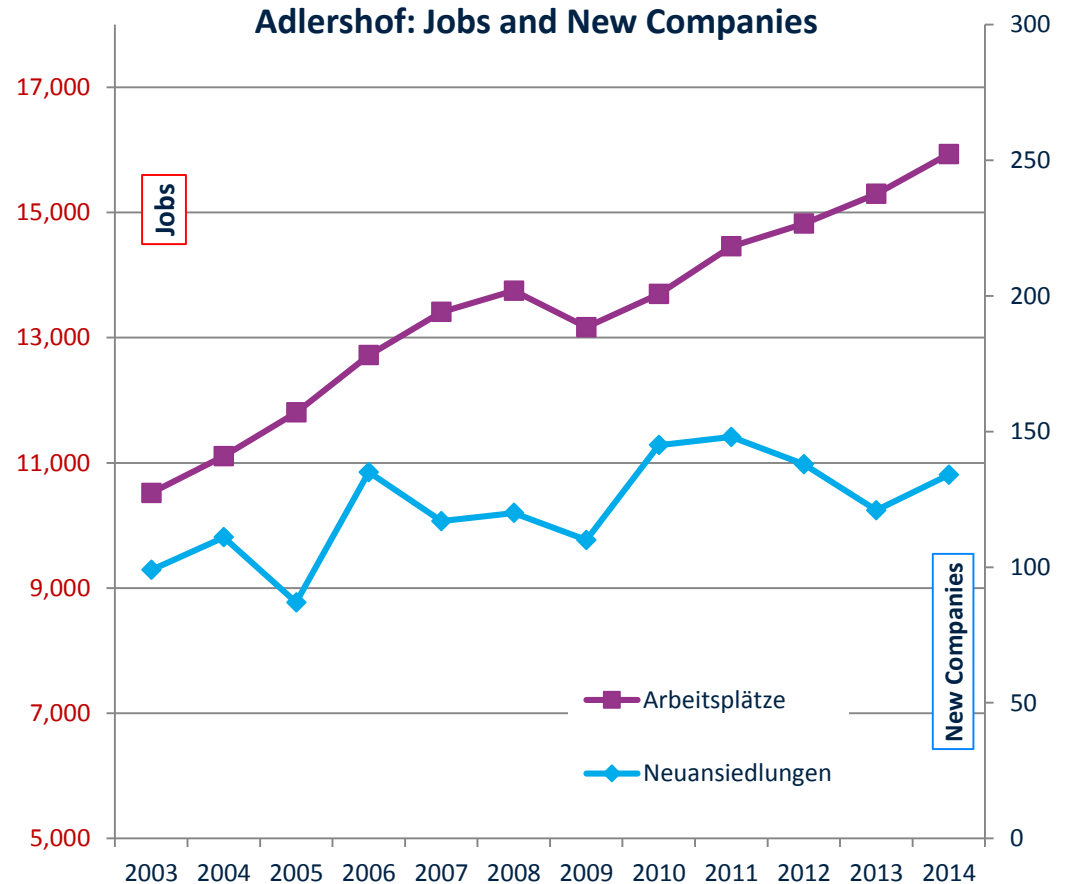


Continuous Growth in Adlershof

Status 12/2014:

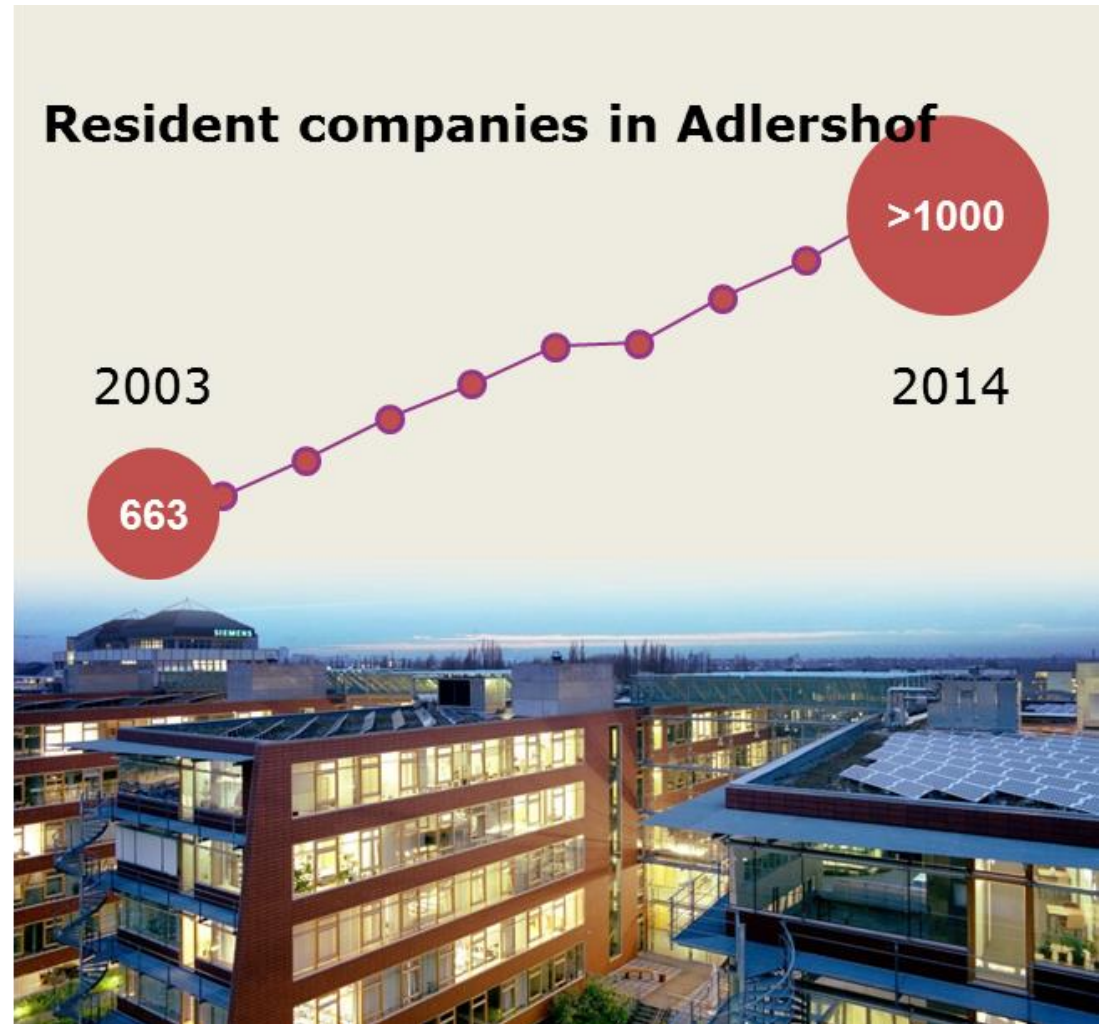
16.000 Jobs

135 New Companies

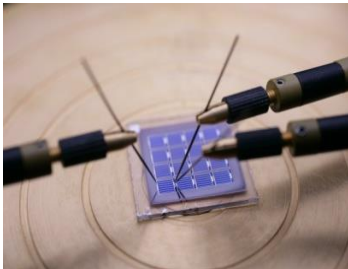


The „Adlershof System“

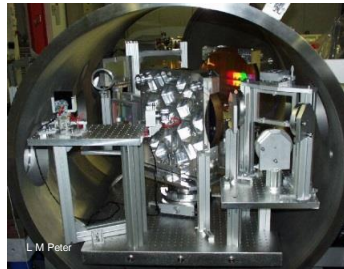
- Big scientific cluster
- Clear technology profile
- Support of entrepreneurs
- Systematic incubation
- Excellent infrastructure
- Soft landing services
- Networking
- Management and governance
- Long-term planning



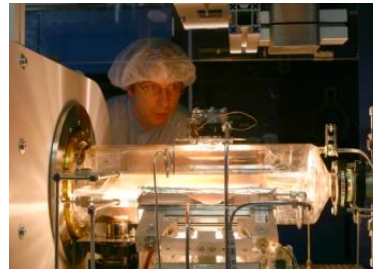
Our key scientific subjects – 3000 researchers



Energy



Optical Sciences



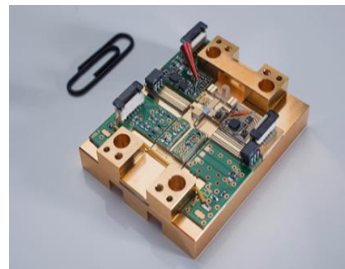
Material Sciences



Mobility research



Renewable Energies



Microsystem Technology



Analytical Sciences



Space Research

The Adlershof Profile: Sci Tech



Photonics und optics



Renewable energies and photovoltaics



Microsystems and materials

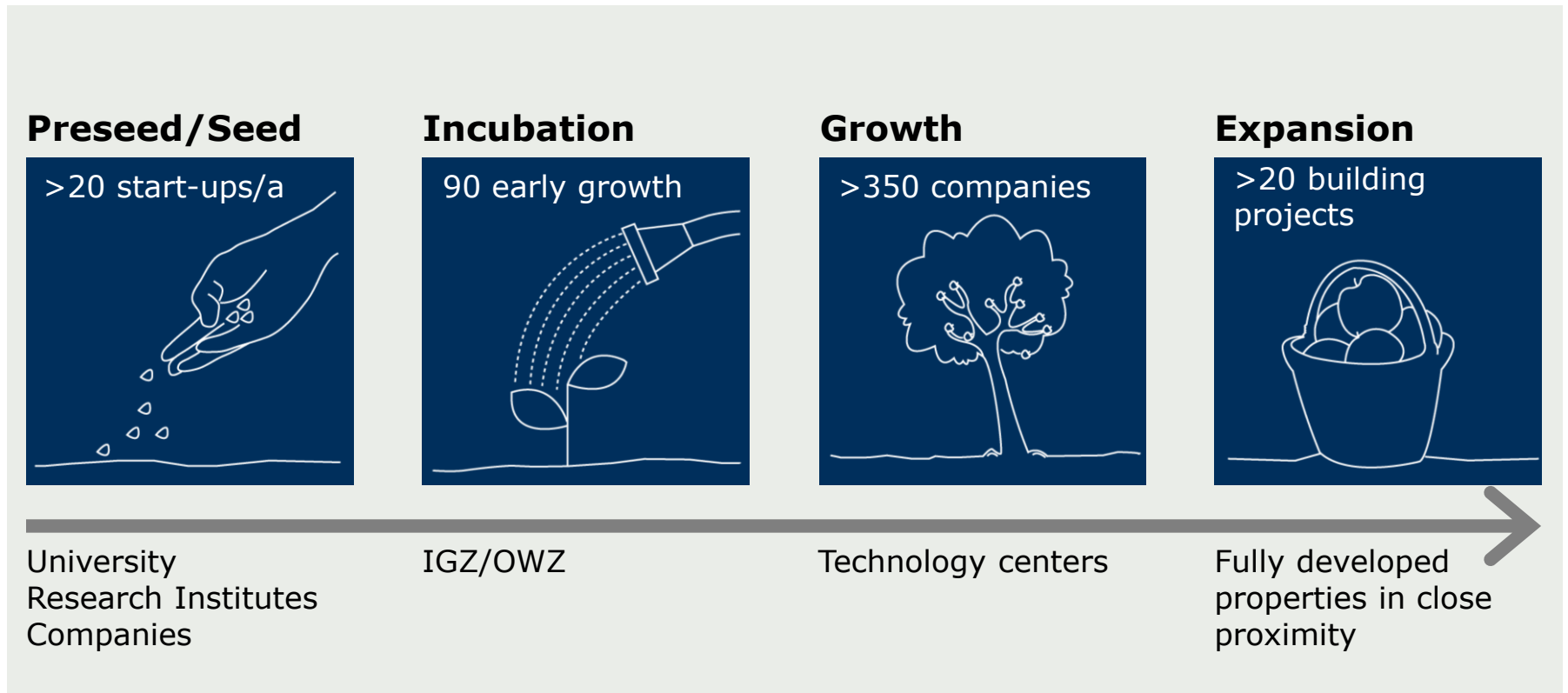


IT and media



Biotechnology and environmental technologies

Systematic incubation system – Plug & Work



Infrastructure Technology Centers – 150.000m²

Modern high-tech infrastructure for small and medium-sized companies

Zentrum für Biotechnologie und Umwelt II



Zentrum für Mikrosysteme und Materialien



Zentrum für IT und Medien I



Zentrum für Biotechnologie und Umwelt I



Zentrum für Photovoltaik und Erneuerbare Energien



Zentrum für Photonik und Optische Technologien

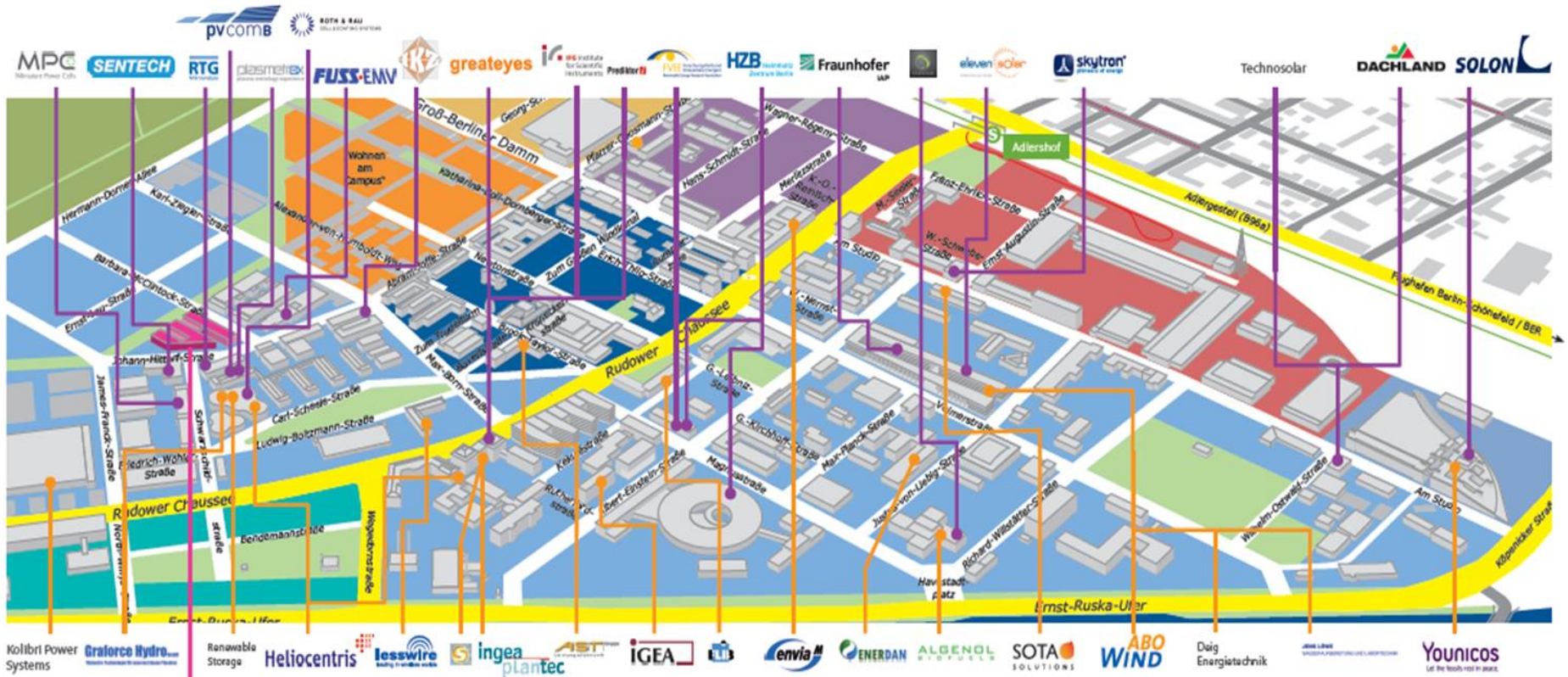


Johann von Neumann-Haus



Zentrum für IT und Medien III

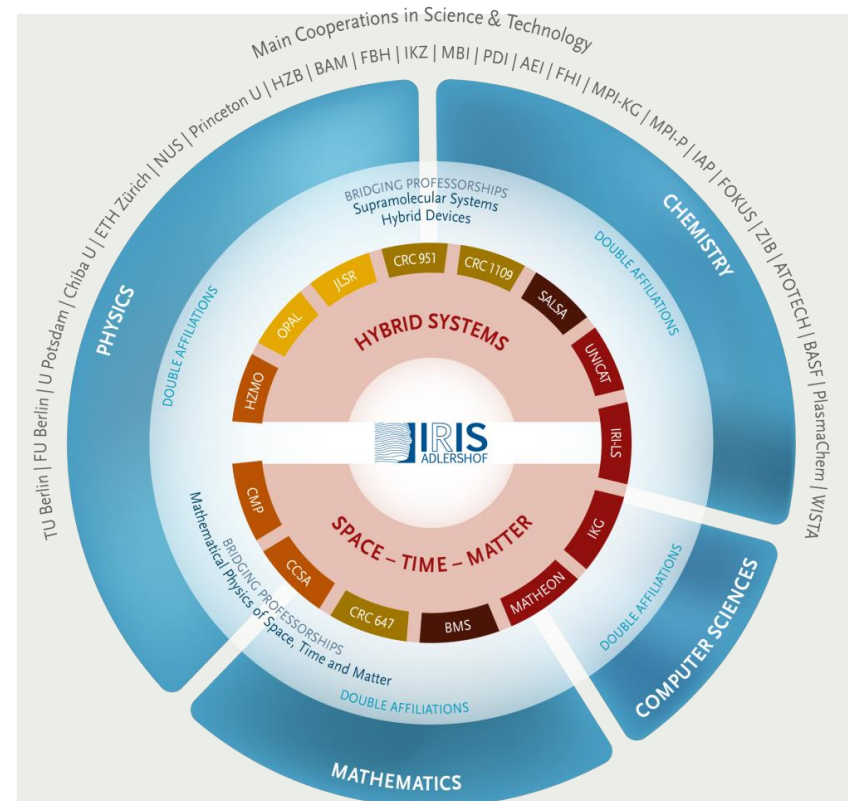
Co-operative neighbourhood - our renewable energy cluster as of 12/2014



IRIS Adlershof - Integrative Research Institute for the Sciences

Research Areas

- Interdisciplinary research on new hybrid materials and systems with completely new optical, electrical, mechanical and chemical properties.
- Fundamental research on the structure and dynamics of matter on extreme longitudinal and time scales



Humboldt-ProMINT-Kolleg

Subjects

- Didactical research and development of new curricula for teachers in science
- Linking the disciplines

Cooperation partners:



School of Analytical Sciences Adlershof (SALSA)

Subject

- Graduate education in a interactive and multidisciplinary way
- Linking physics, analytical and physical chemistry, synthetical organic and anorganical chemistry, biology, modelling and didactical approaches



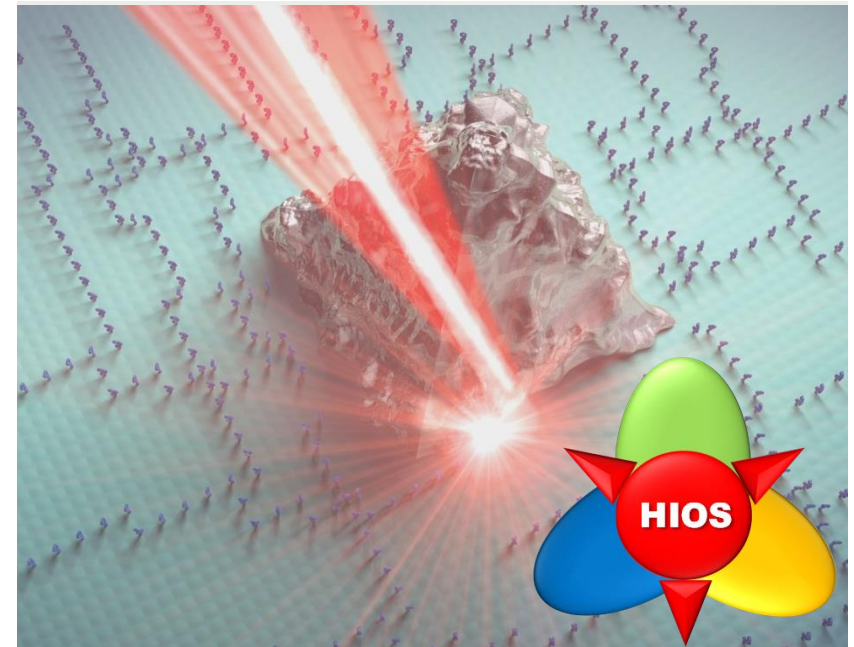
Special research area SFB 951: Hybrid Inorganic/Organic Systems for Opto-Electronics (HIOS)

Research:

Novel hybrid materials, consisting of anorganical semi-conductors, conjugated organic molecules and metallical nanostructures.

Goal:

Creating complex hybrid systems with fundamentally improved and completely new opto-electronical properties



Innovation Network Advanced Materials – IAM

A new project (2016 – 2018) creating a new network with strong national and international partners

Netzwerkpartner

Die Kernpartner des High-Tech Netzwerkes



IRIS
Das *Integrative Research Institute for the Sciences*

OSRAM

OSRAM
Führender Lichterhersteller und industrieller Partner



BatchOne
Antragsteller und Netzwerkpartner

Wista
Infrastrukturpartner Und Technologiepark
Betreiber Adlershof



Humboldt Innovation
Wissens- und Technologietransfergesellschaft der Humboldt-Universität



FabLab
Eine offene Entwicklungswerkstatt mit Zugang zu High-Tech Werkzeugen



New analytical methods

Goal/Subjects:

- Synthesis of new referential and calibrating standards for the development of analytical processes for contaminations in food and animal feed.
- Development of isotope based markers as standards for LC-MS/MS.



Cooperation partner

ASCA GmbH, BAM



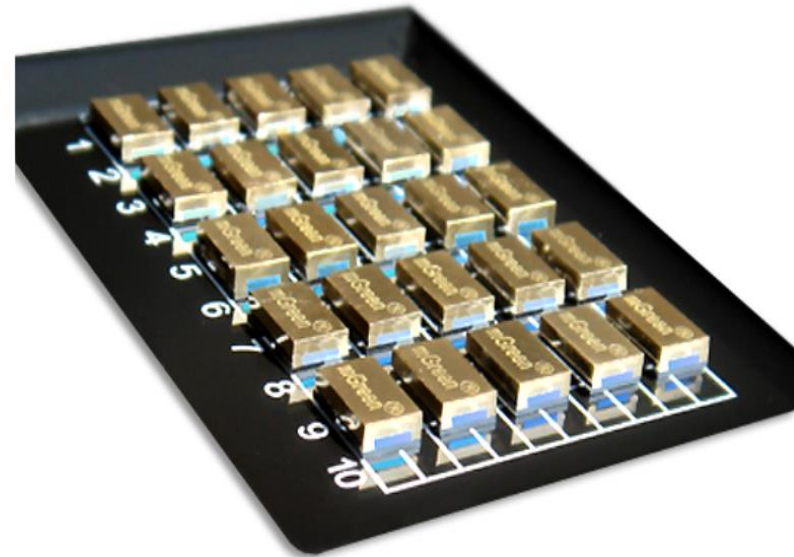
Ferdinand Braun-Institut – Brilliance Fab Berlin

Subject

- Ferdinand-Braun-Institut (FBH) and chinesischen company Sino Nitride Semiconductor CO., LTD (SNS) had a cooperation
- Brilliance Fab Berlin GmbH (BFB) was founded as spin-off in May 2013.
- BFB develops semiconductor laser technology created in FBH for industrial use

Project partners

Ferdinand-Braun-Institut, Leibniz-Institut für Höchstfrequenztechnik and Brilliance Fab Berlin GmbH & Co. KG



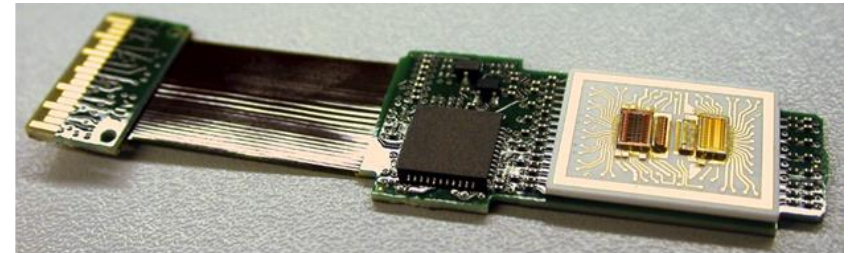
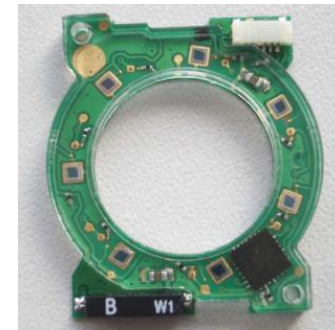
Inter company cooperation

Subject

Joining forces for the development of electro-optical components

Project partners

AEMtec GmbH, opTricon GmbH



AIM – Adlershof Innovation Management

Subject

Bundling of know-how regarding "Areas of Innovation"

Joint projects in planning, development and coaching of campuses and science parcs.

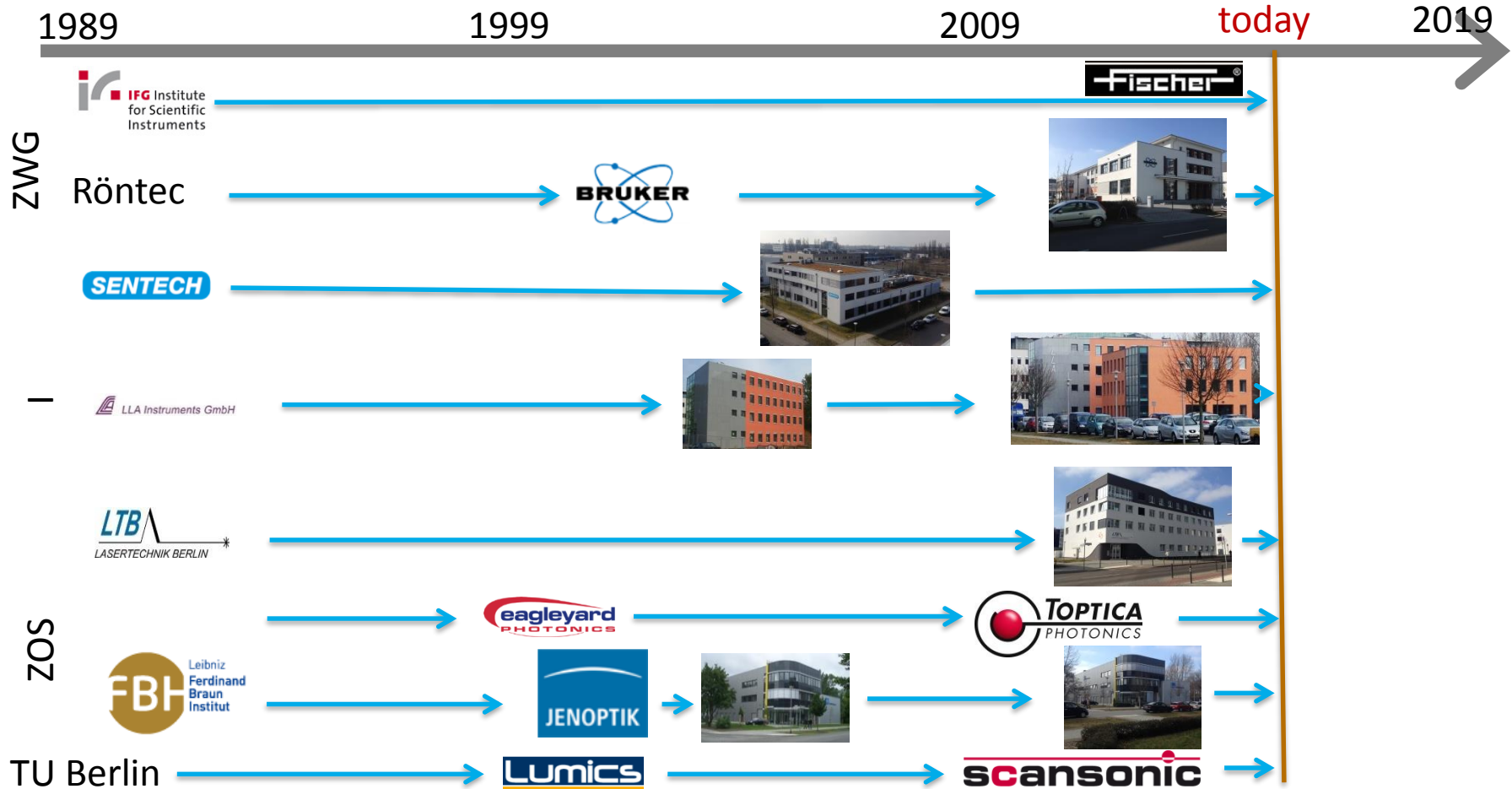
Projektpartner

WISTA-MANAGEMENT GMBH
 Institute for Geography Humboldt-Universität zu Berlin

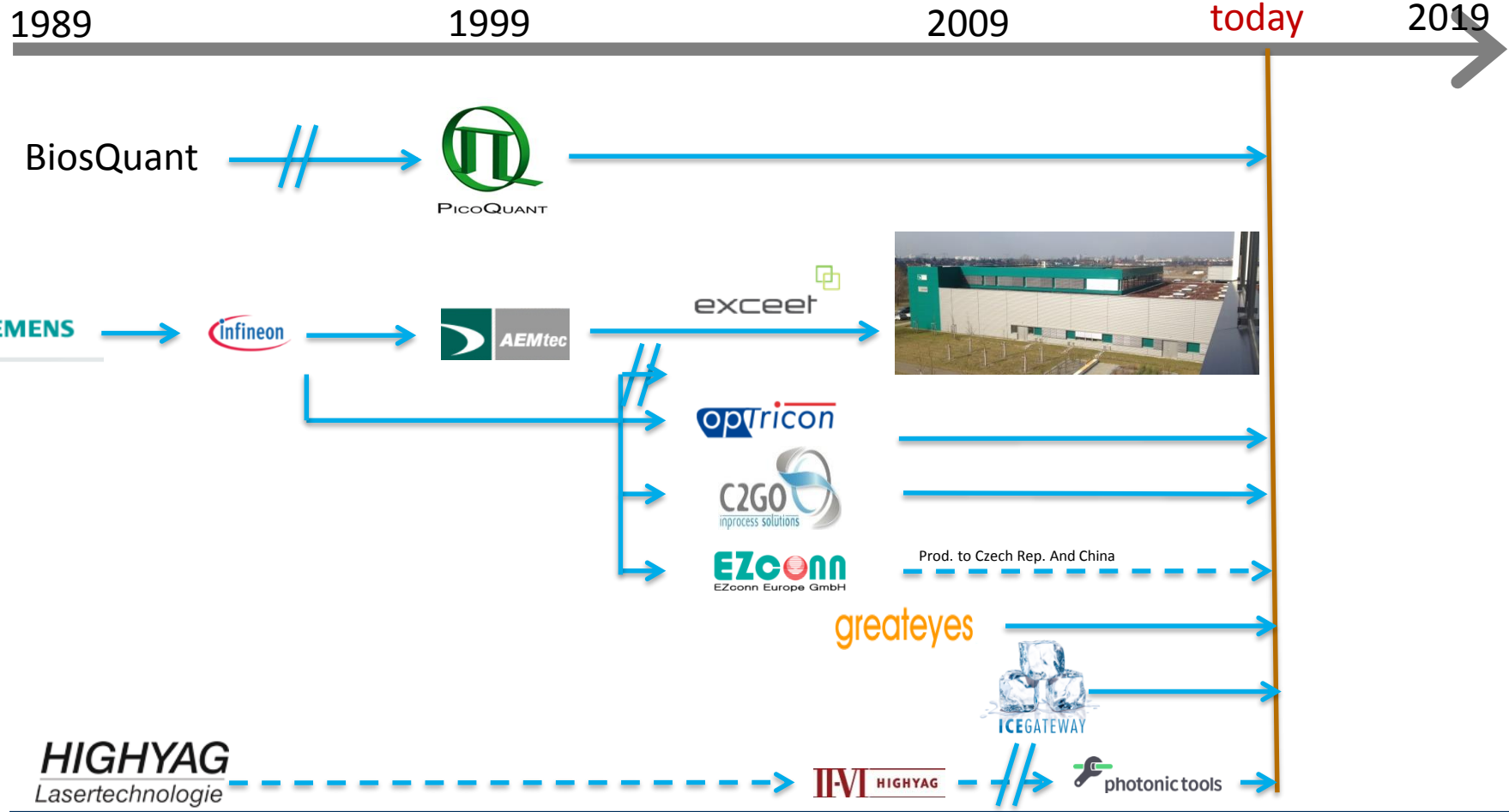
Konzept für Inkubator in der Sino-German Metal Eco City, Jieyang (CHN)



Successful startups



Successful startups



Adlershof today: Private investment is dominant

	1991 - 2005		2006 - 2012		Total	
	Mio. €	%	Mio. €	%	Mio. €	%
Investments in Infrastructure	503	35	167	21	670	30
Investments in Scientific Institutes	427	30	10	1	437	20
Investments by WISTA MANAGEMENT GMBH	290	20	72	9	362	16
Private Investments	198	14	541	68	738	33
Total	1.417		790		2.207	

