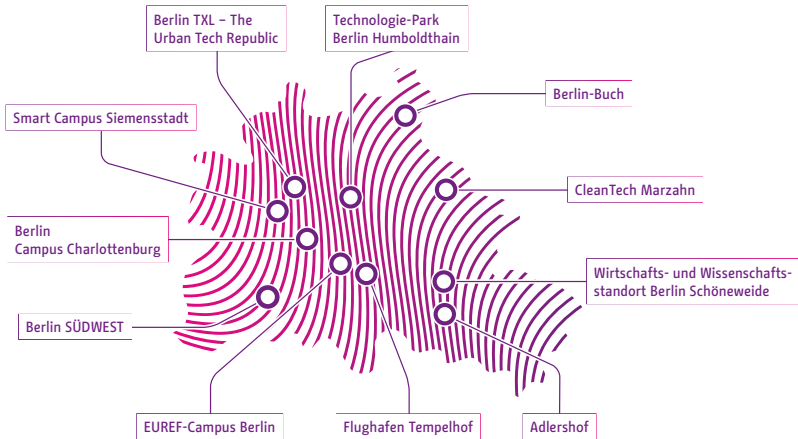




ZUKUNFTSORTE BERLIN



Future will be good. Because we're shaping it!



Ramona Pop
Senator for Economics,
Energy and Public Enterprises

Are you ready to shape the future?

The future is built on how we realise ideas today. For ideas to become a reality, they need space to grow. This is the underlying concept of Berlin's "Zukunftsorte", which is what we call places across the city that are on the forefront of creating

future innovation. We cooperate closely with our local partners to strengthen Berlin's position as a location for business, science, and research, facilitating new value creation chains through innovative products and services.

Businesses benefit from the close ties

between companies and research, excellent business conditions, and a diverse range of support services. The "Zukunftsorte" brand is both a cornerstone of Berlin's renaissance as an industrial location as well as a growth-enhancing environment for developing start-ups and small businesses, especially high-innovation companies that manage to stand out in an increasingly diversifying industry landscape. These companies are creating a pool of competitive technologies in Berlin with considerable synergy effects. Helped along by this broad spectrum, we

aim at tackling current challenges like climate change as well as setting the course for the development of technologies in the future.

The "Zukunftsorte" play a substantial role in Berlin's economic development. Our aim is to unlock their full potential for strengthening and developing Berlin as a business location. Read on to find out how we are working hand in hand with our partners to use your innovations to shape the future.



Adlershof

Where high-tech economy emerges from the sciences

Berlin Adlershof is not only Germany's largest science and technology park. It is also one of the most successful of its kind. Adlershof has established a well-thought-out system of cooperation between research institutes and high technology companies. Science and business benefit from their inspiring

neighbourhood because this leads to innovative products, which in turn contribute to rapid economic growth. Adlershof attracts both start-ups and established companies. The site not only offers them space for growth, but also active support from experienced park managers.

Industries

Traffic technology & Mobility • Medicine & Healthcare Management •
Life science & Biotechnology • Energy & Environmental technology •
Media & creative industries • Photonics & Optics • IT & Automation •
Microsystems & Materials



Berlin-Buch

Green Health City – for the future of medicine

Berlin-Buch is an internationally renowned science, medicine and technology location in the northeast of Berlin. Around 6,500 people work here in the health industry. At its heart is the 32-hectare Berlin-Buch Campus, which houses excellent research institutes in the fields of molecular medicine and pharmacology as well as clinical research – and one of the largest biotech parks in Germany.

With its clear focus on biomedicine and interdisciplinary cooperation, the campus has outstanding potential for innovation and growth. This profile is completed by the clinics on site. Starting in 2023, the BerlinBioCube in the BiotechPark Berlin-Buch will offer an additional 8,000 square meters of laboratory and office space and attractive services for start-ups in the life sciences.

Industries

Medicine & Healthcare Management • Life science & Biotechnology





Campus Charlottenburg
The art of ideas.

Berlin Campus Charlottenburg

One of Europe's biggest science campuses

Campus Charlottenburg is one of Europe's biggest innercity university campuses, situated in the urban centre of Berlin. The large number of universities, research institutes, business enterprises, cultural institutions and associations create a melting pot for interdisciplinary

research and development that also offers an ideal environment for start-ups. Campus Charlottenburg was initiated by the Technische Universität Berlin, Universität der Künste Berlin and the Berlin district Mayor of Charlottenburg-Wilmersdorf.

Industries

Traffic technology & Mobility • Medicine & Health Care •
Energy & Environmental technology • Media & creative Industries •
Photonics & Optics • IT & Automation



Zukunftsort

Berlin SÜDWEST

Berlin SÜDWEST

The German Oxford

Berlin SÜDWEST has been a traditional research location for over 100 years. Today, the “German Oxford” is one of the four largest scientific locations in Germany. Many startups, especially in the fields of biotechnology and life sciences, have developed from the many prestigious institutions based here – such as the Free University of Berlin, the Charité University Medicine

Campus Benjamin Franklin, Federal Institute for Materials Research and Testing and the HZB Helmholtz Centre Berlin for Materials and Energy. After the building work has been completed, the FUBIC university business and innovation centre will provide start-ups and established companies with a place for synergies, communication and growth on an area of 50,000 sqm.

Industries

Medicine & Healthcare Management; • IT & Automation •
Microsystems & Materials



Berlin TXL - The Urban Tech Republic

The dream of flying has come true. Time for new dreams.

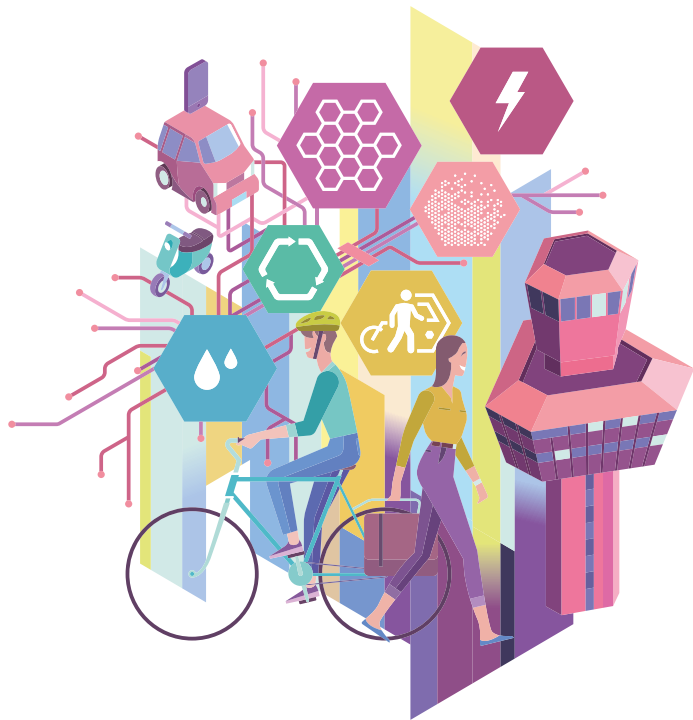
The area of the former Airport Tegel will see the development of a research and industrial park for urban technologies: "Berlin TXL – The Urban Tech Republic". Here research institutions, start-ups, companies both large and small around a university campus will become one community where urban technologies are jointly researched, developed, produced, tested, and exported. Researchers and developers

will meet here with representatives of industry and business, and start-ups will be able to connect with investors.

The innovation park focuses on those aspects needed to sustain the growing cities of the 21st century: the efficient use of energy, environmentally friendly mobility, sustainable construction, recycling, clean water, intelligent management system for technical infrastructure and use of new materials.

Industries

Traffic technology & Mobility • Energy & Environmental technology •
IT & Automation • Microsystems & Materials





The future will be made in Berlin.

CleanTech

Business Park Berlin-Marzahn

CleanTech Marzahn

Maximum space for Berlin's new industries

As Berlin's largest industrial area, the CleanTech Business Park Berlin offers ideal parameters for manufacturing companies that specialise in sustainable and efficient technologies, and thus offers potential for both global players and small & medium-sized enterprises.

The CleanTech Business Park Berlin presents any number of promising opportunities to exchange information on skills and expertise with others. This extensive city-centre industrial park also offers expanding companies plenty of room for growth.

Industries

Medicine & Healthcare Management • Life science & Biotechnology •
Energy & Environmental technology





EUREF-Campus Berlin

A real-world laboratory for an energy revolution

The EUREF-Campus Berlin is an innovative location with plenty of space for inspiration and networking. Since 2008, the EUREF AG (European Energy Forum) has been developing the area around the Gasometer into a centre for innovative and sustainable energy and mobility concepts. Here, more than 3,500 people at over 150 work for a

climate-neutral, resource-saving, smart city of tomorrow – collaboratively, openly and jointly. The EUREF-Campus is already fulfilling the Federal Government's CO² climate goals for 2050 – today. Currently, a second innovation campus of this kind is being created in Germany: The EUREF-Campus Düsseldorf.

Industries

Traffic technology & Mobility • Energy & Environmental technology • Media & creative industries • IT & Automation



Flughafen Tempelhof

Artistic, cultural and creative district in the making

This colossal but unfinished building has many stories to tell, mirroring Berlin's turbulent history. The building is being redeveloped into a lively city quarter; a place for experimentation, art, culture, creative industries and public use. It is a unique event venue

and a location offering creative and innovative products and services. Soon, the TOWER THF and the open-air History Gallery will open to the public. Already, CHECK-IN visitor center offers information on the history and future development of the building.

Industries

Media & creative industries



SIEMENS

Ingenuity for life

Smart Campus “Siemensstadt”

#Siemensstadtcalling

Siemens is investing in its future and in Berlin. A closed, historical industrial area in Spandau is being transformed into a modern, open and livable district. A new world of living and working, in which electromobility, Industry 4.0, the Internet of Things and Artificial Intelligence are becoming present. A carbon-neutral Smart Campus and a “Zukunftsort”,

where everyone can freely unfold. This new “Siemensstadt” creates connections. Between yesterday, today and tomorrow. Between work and life. Between science, education, research and development. Between Siemens, its partners, customers and the people of the city. Between Berlin and the world.

Industries

Traffic technology & Mobility • Energy & Environmental technology • IT & Automation



Technologie-Park Berlin Humboldtthain

An evolutionary location for leading technology companies

Germany's oldest business incubator makes this place something special. The BIG innovation and start-up centre is situated at the very heart of Berlin, on a former AEG complex. Today, more than 150 companies have settled around this centre.

Together, they make up the Technologie-Park Berlin Humboldtthain. This campus, right at the centre of the city, has its sights firmly set on the technologies of the future.

Industries

Traffic technology & mobility • Medicine & Healthcare Management •
Life science & Biotechnology • Energy & Environmental technology •
Media & creative industries • Photonics & Optics • IT & Automation •
Microsystems & Materials



Wirtschafts- und Wissenschaftsstandort Berlin Schöneweide

Technology and urbanity in Southeast Berlin

The Berlin Schöneweide Business and Science District, situated along the banks of the River Spree, offers a creative environment which is highly valued by globally successful companies active at the intersection of technology, science and design. The HTW Berlin – Berlin's largest university of applied sciences – constitutes an important

nucleus for cooperation between science and business at this innovative and future-oriented locality. Whether for engineering in the field of high-technology applications or for the cultural and creative industry and design sectors, Schöneweide offers a fertile and supportive environment for start-ups and established companies alike.

Industries

Traffic technology & mobility • Energy & Environmental technology •
Media & creative industries • Photonics & Optics • IT & Automation •
Microsystems & Materials




Business Office Zukunftsorte

WISTA Management GmbH
Schwarzschildstraße 6
12489 Berlin

info@zukunftsorte.berlin
www.zukunftsorte.berlin

 [zukunftsorte.berlin](https://www.instagram.com/zukunftsorte.berlin)

 [zukunftsorte](https://twitter.com/zukunftsorte)



Federal Ministry
for Economic Affairs
and Energy

Senate Department
for Economics, Energy
and Public Enterprises

berlin Berlin

The business office "Zukunftsorte" is a project run by the Senate Department for Economics, Energy and Public Enterprises. It is part of the community economic development "Improving the Regional Business Structure" (GRW), which is jointly and equally funded by the federal and state governments.

WISTA Management GmbH is entrusted with project implementation.